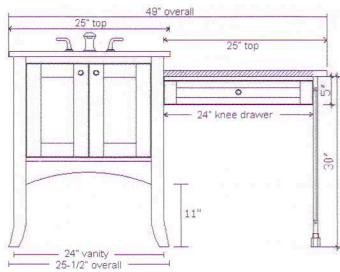


## SHAKER (Dark Cherry) and SHAKER II (White)

### 24" Width configuration with 24" Knee Drawer

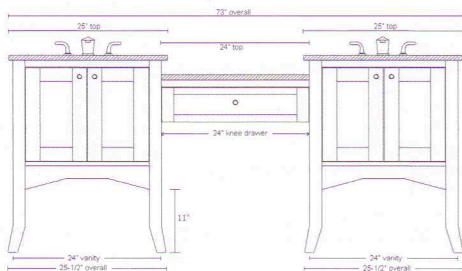


overall width: 49"

- 24" Vanity 125-24 or 185-24
- Vanity Top T-2522 (BA, GG, GO or WC)
- 24" Knee Drawer 125-KD24 or 185-KD24
- 25" Knee Drawer Top T-2522KDR (or L) (BA, GG, GO or WC)
- Knee Drawer Side Panel 125-KDP30 or 185-KDP30 (R or L)  
shown as R

height from floor to bottom of vanity = 11"

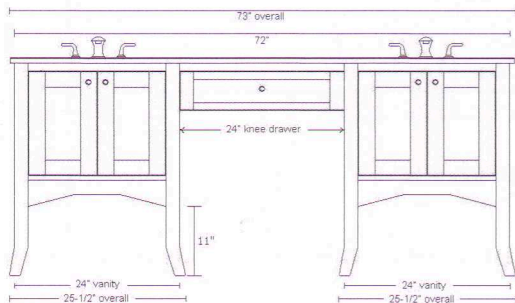
### 72" Width configuration with dropped 24" Knee Drawer



- 2 @ 24" Vanity 2 @ 125-24 or 185-24
- 2 @ Vanity Top 2 @ T-2522 (BA, GG, GO or WC)
- 24" Knee Drawer 125-KD24 or 185-KD24
- 24" Knee Drawer Top T-2422KD (BA, GG, GO or WC)

height from floor to bottom of vanity = 11"

### 72" Width configuration with flush 24" Knee Drawer

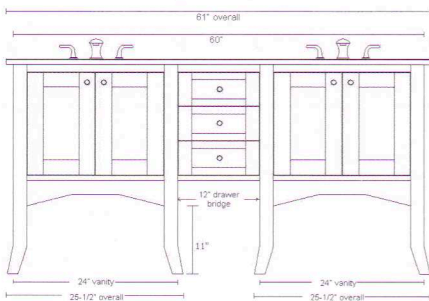


- 2 @ 24" Vanity 2 @ 125-24 or 185-24
- 24" Knee Drawer 125-KD24 or 185-KD24
- Vanity Top T-11772BA (ease) or T-11772GG (ease)

height from floor to bottom of vanity = 11"

bowl opening center to center: 48"

### 60" Width configuration with 12" Drawer Bridge

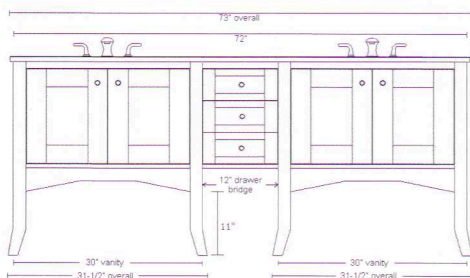


- 2 @ 24" Vanity 2 @ 125-24 or 185-24
- 12" Drawer Bridge 125-DB12 or 185-DB12
- Vanity Top T-6122D (BA, GG or WC)

height from floor to bottom of vanity = 11"

bowl opening center to center: 36"

### 72" Width configuration with 12" Drawer Bridge



- 2 @ 30" Vanity 2 @ 125-30 or 185-30
- 12" Drawer Bridge 125-DB12 or 185-DB12
- Vanity Top T-7322D (BA, GG or WC)

height from floor to bottom of vanity = 11"

bowl opening center to center: 42"